



# Quick Installation Guide

4 Channel H.264 Compression DVR with  
(CIF) Real-Time Recording and  
4 Color CCD Camera Kits  
**MODEL QR424-403**

---



**Q-SEE QUICK INSTALLATION GUIDE**  
**MODEL NUMBER QR424-403**

**PART 1 - PACKAGE CONTENTS:**

**4 - Color CCD Cameras with Stands**  
2 – QSDS14273 (6mm)  
2 – QSDS14273W (3.6mm)

**Pre-Installed  
Hard Drive**

**User's  
Manual**

**QSDR04RTC DVR**



**Power Supply  
for DVR**

**Power Supply &  
4 -Way Splitter  
For Cameras**

**Camera Cables  
(4 Included)**

**BNC (M) - RCA (F)  
Adapters  
(2 Included)**



**Software  
CD**

**Ethernet  
Cable**

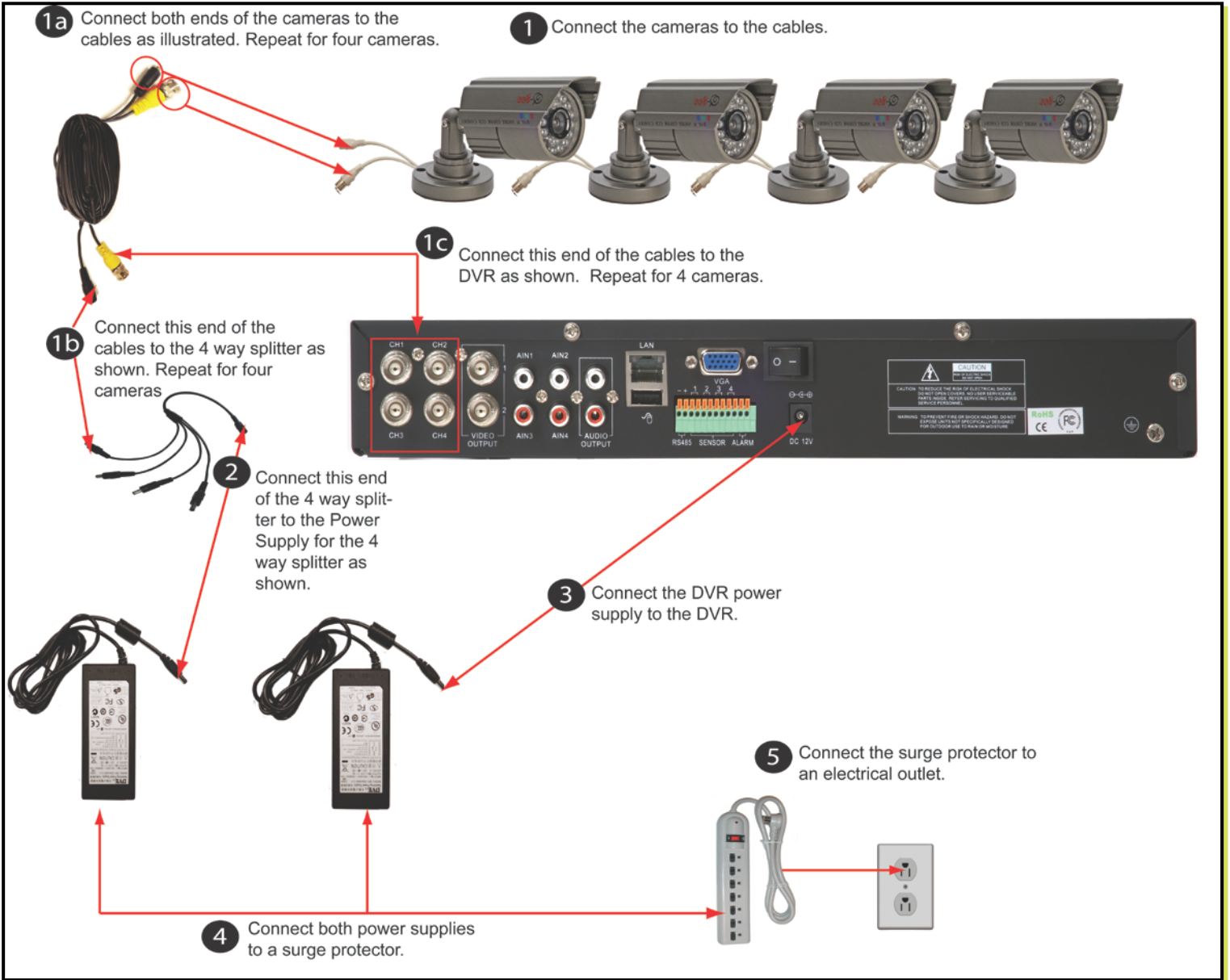
**USB 2.0  
Mouse**

**Remote  
Control**



**Q-SEE QUICK INSTALLATION GUIDE**  
**MODEL NUMBER QR424-403**

**PART 2 - DVR CAMERA AND POWER CONNECTIONS**



Please note that it is **STRONGLY** recommended to use a surge protector that is UL-1449 rated. Look for a clamping voltage of 330 or lower, a Joule rating of at least 400 and a response time of 10 nanoseconds or less.

**Q-SEE QUICK INSTALLATION GUIDE**  
**MODEL NUMBER QR424-403**

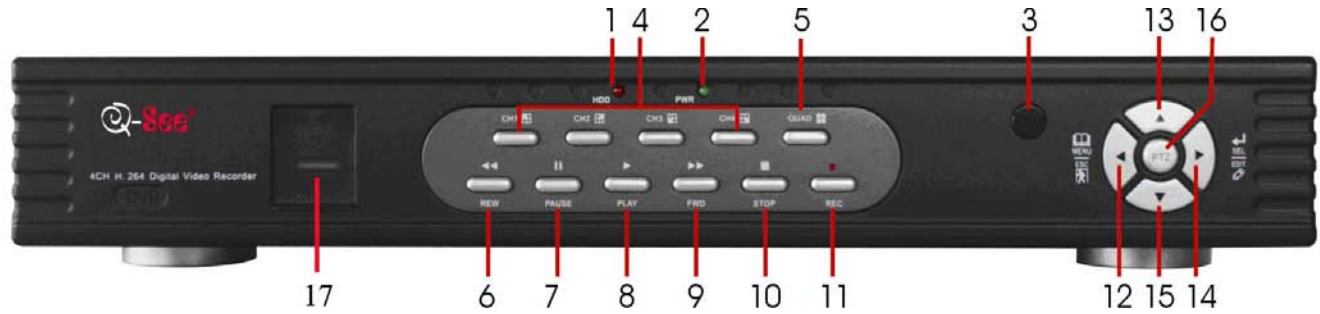
**PART 3 - CONNECTING THE DVR TO YOUR TV**

1. Plug the BNC to RCA adapter in to Video Out port then connect the RCA cable (not included) to the DVR.
2. Connect the other end of the RCA cable to the Video Input on the TV if you are using a television screen.
3. If you are using a PC monitor, plug the VGA cable (not included) to the VGA port on the DVR.
4. Connect the other end of the VGA cable to the monitor.



**Q-SEE QUICK INSTALLATION GUIDE**  
**MODEL NUMBER QR424-403**

**PART 4 - DVR CONTROLS: FRONT PANEL**



Item Number	Button Name	Symbol	Function
1	HDD	HDD	When the "Red" Indicator Light Flashes, it Means the Hard Drive is Being Read or Written to
2	POWER INDICATOR	PWR	If the "G" Indicator Light is on, the System is Getting Power
3	IR Receiver		Receives Signal from Remote Control
4	CH 1 CH2		Select Single Channel Display
	CH3 CH4		
5	QUAD		Display all Cameras in Live Display or Playback Mode
6	REW	◀◀	Move Left/Reverse
7	PAUSE		Pause/Play Frame by Frame, Dwell Time (Sequential Channel Switch) During Single Camera Display
8	PLAY	▶	Play Recorded Video
9	FWD	▶▶	Move Right/Play Forward
10	STOP	■	Stop Playback/Stop Manual Recording
11	REC	●	Start Manual Recording
12	MENU/ESC	◀	Enter Main Menu or Exit Menu
13	UP	▲	Move Up
14	SEL/EDIT	▶	Select Key/Edit
15	DOWN	▼	Move Down
16	PTZ	PTZ	Enter PTZ Control Mode
17	USB 2.0 PORT		Backup to USB Flash Drive and USB Hard Drive



# Q-SEE QUICK INSTALLATION GUIDE

MODEL NUMBER QR424-403

## PART 5 - ACCESSING THE DVR MENUS



Choose MENU by right clicking on the mouse or by pushing the MENU button on the DVR front panel or remote control.

The Main Menu offers the following Setup Features:

**CAMERA:** Setup name display, position, image view, and record quality of each channel (cameras).

**RECORD:** Enable recording & audio, set resolution & quality, recording mode and file size.

**NETWORK:** Setup Network access (Remote Internet Monitoring).

**SEARCH:** Find files for playback and backup.

**DEVICES:** Manage & Format hard drive and USB devices, setup alarms, PTZ cameras, mobile phone access and motion detection.

**SYSTEM:** Setup time, date, password, and video mode.

## PART 6 - SETTING UP CAMERAS FOR VIEWING AND RECORDING



From the Main menu, select CAMERA. Here you can setup the name display (up to 8 characters) and position of each channel (cameras). Select COLOR SETUP to adjust the image brightness, saturation, contrast and hue settings for each channel (camera). You can also choose whether each channel can be previewed in LIVE MODE and/or RECORDING MODE.

### PART 7 - TO START RECORDING

This System offers 3 modes for recording:

**1. Manual 2. Time Schedule 3. Motion Detection.**

From the main menu, select RECORD to enter into the Record Setup menu (shown at right).

**CHANNEL:** "ON" enables video to record from the respective camera. If the channel is set to "OFF", video from that channel will not record.

**RESOLUTION:** D1=704x480, HD1=704x240, CIF=352x240

**QUALITY:** Best, Good, Normal

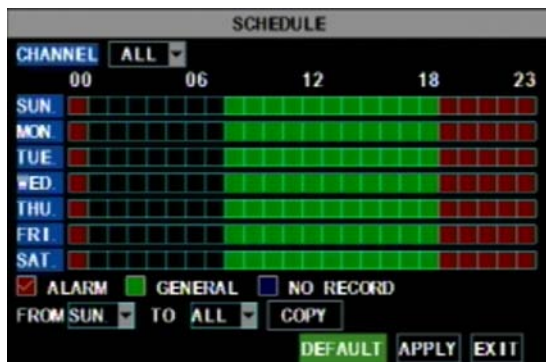


Using higher resolution and quality settings results in better video quality, but takes up more space on the hard drive. Choosing lower settings result in lower video quality, but takes up less space on the hard drive.

**AUDIO:** If audio is ENABLED sound will be recorded with the video from the channels, and will have audio output in playback mode. If audio is DISABLED, sound will not record, and there will be no audio output in playback mode (Audio cameras or a microphone is required to record the sound).

**REC MODE:** Sets DVR to record on Manual, Motion Detection, and Time Schedule Recording (detailed instructions below).

**PACK TIME:** Choose the time length of all recorded files: 15, 30, 45, 60 min. (Max = 60 min)



**Grid Explanation:**  
 Red = Alarm (motion detection) recording  
 Green = General (time schedule) recording  
 Transparent = No recording  
 Blue = The channel and date selected.

**Manual Recording:**

From the Record Setup screen set the Rec Mode to "ALWAYS". Your DVR will continuously record and separate files will be created with the Pack Time intervals you selected.

**Time Schedule Recording:**

From the Record Setup screen, set the Rec Mode to "TIME SCHEDULE RECORD" and click "SCHEDULE" in green. This will display the Schedule menu (see below image). Select the channels (cameras) that you wish to record on a schedule. The options are: All, CH-1, CH-2, CH-3, and CH-4 respectively. The channel you select will be highlighted in "Blue", and the unselected channels will be "Grey. Click on the green GENERAL option box then click on the boxes for the days and times that you want to record using this option on the timeline. You can use the [From – To] pull-down menus and COPY button to copy settings from one day to another day, or all days. Your DVR will record on it's Time Schedule, and separate files with the Pack Time Interval you selected. Click APPLY to activate your customized schedule, and then reboot the DVR.

You can also click on the DEFAULT button to use the system defaults. The system default settings are:

- Hr 01:00 am-07:59 am : No recording
- Hr 08:00 am-18:59 pm : General recording (Time Schedule)
- Hr 19:00 pm- 00:59 am : Alarm recording (Motion Detection)

# Q-SEE QUICK INSTALLATION GUIDE

## MODEL NUMBER QR424-403

### Motion Detection Recording:

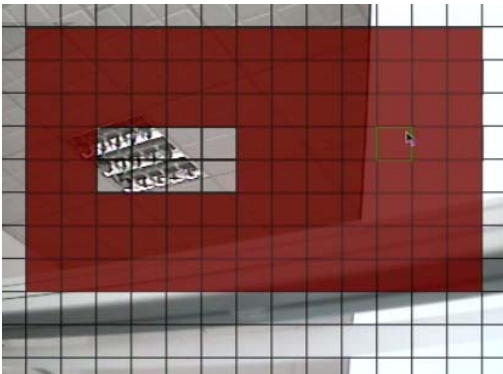
From the Record Setup screen, set the Rec Mode to "TIME SCHEDULE RECORD" and click "SCHEDULE" in green. This will display the Schedule menu (See picture above). The options are: All, CH-1, CH-2, CH-3, and CH-4 respectively. The channel you select will be highlighted in "Blue", and the unselected channels will be "Grey. Click on the red ALARM option box then click on the boxes for the days and times that you want to record using this option on the timeline. You can use the [From – To] pull-down menus and COPY button to copy settings from one day to another day, or all days. Your DVR will record on Motion Detection. Click APPLY to activate your customized schedule, and then go to the Devices option (red box in first below picture) and select the Motion Option (red box in second picture below), which will display the Motion Detect Box.



The Motion detection Menu has three sections, including Channel Status, Sensitivity and Motion area.

**STATUS:** This option allows you enable motion detection on any channel.

**SENSITIVITY:** This option allows you to set sensitivity level of motion detection from 1 to 4, with 4 being the highest.



Next, click on the MD AREA SETUP button, which will display the picture on the left. This option allows you to select the area you want to be sensitive to motion. The area in red is sensitive to motion. You can set this area by using the mouse or REV, FWD, and SEL keys on the front panel. Once you have set the area, right click with the mouse or push the ESC key to save the setting. After you have set all of the cameras, click on the Apply button to save the settings.



# Q-SEE QUICK INSTALLATION GUIDE

## MODEL NUMBER QR424-403

### PART 8 - SETTING UP THE DVR TO PLAYBACK

#### Searched Playback:

From the Main Menu select SEARCH to display the Video Search Menu shown to the right. If you input a specific date and click Search, you will find all the recordings for that day. When you select an item, you will playback the recordings in 4 channel mode; or, click [File list] button to display File list interface, where you can playback or backup the file you selected. See File List heading below.



In the playback window you can play video Forward at 2x, 4x, and 8x speeds, Slow play at 1/2x, 1/4x, and 1/8x, or normal play, pause and play frame by frame using the playback control bar, and adjust volume by clicking or sliding tune control bar. When playback has finished, system will return to previous menu.



#### File List:

On the Video search menu mode, click the Search button then click File list to display the sub-menu shown in the picture on the left.

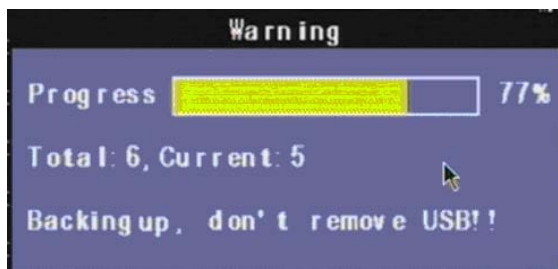
This option will allow you to view all of the available files by channel and type (all, normal, or alarm).

You can select a file and push the SEL button to playback the file, or use the FWD button and down button to select the backup option and backup the recorded file you selected. You can also put a checkmark in the BAK box at the end of multiple files if you want to backup more than one file. See section 5.2.4 Search Recordings in the User Manual for more information on using the File List option.

### PART 9 - BACKING UP THE VIDEO ON THE DVR

Attach a USB flash drive or USB hard drive to the USB backup port and follow the instructions in Part 8 to go to the File List in the Search menu.

If you want to backup a single recorded file from the file list, from the File List dialog box pictured above, select the file you wish to back up by placing a check mark in the accompanying green box and hit the [BACKUP] button on the right of the screen. You will then receive a pop up screen as illustrated in Picture 22 showing you the progression of your backup. Once backup is complete, you will then receive a pop up message informing you that you have backed up your files successfully (see picture below). Note that all files will be in an H264 format that can be converted to AVI using the Multi Player program that comes with the DVR or through the net-viewer program. Once converted, you can then view these files through any program that supports an AVI format.



# Questions or Comments?

## Contact Us:

**Mailing Address:**

**DPS, Inc.**  
8015 E. Crystal Dr.  
Anaheim, CA 92807

**Website:**

<http://www.q-see.com>

**Fax:**

714-998-3509

**Customer Service:**

Phone: 877-998-3440 x 538  
Email: [cs@dpsi-usa.com](mailto:cs@dpsi-usa.com)  
Live Chat from our Website

**Tech Support:**

Phone: 877-998-3440 x 539  
Email: [ts@dpsi-usa.com](mailto:ts@dpsi-usa.com)  
Live Chat from our Website

REVISED 5/18/2010